

Swales Industrial Park

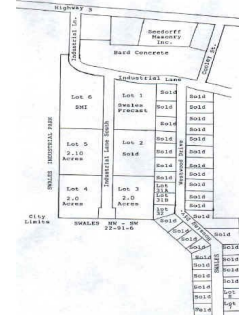
Available Acres: 6.1

Address:

Strawberry Point, IA 52076 (Clayton County)

Property and Area Description:

Located within the city limits of Strawberry Point and in an Enterprise Zone area. Industrial businesses with available lots.



Site Details:

Available Acres: 6.1	Adjacent Available Acres: 0
Topography: Flat	Setting: Industrial Park
Zoning: Industrial-Heavy	Within City Limits: Yes

Contacts:

Local

Strawberry Point Development Fund, Inc.
105 W Mission Street, P.O. Box 85
Strawberry Point, IA
Phone: 563-933-4417
E-mail: econ.dev@strawberrypoint.com
Web site: <http://www.strawberrypoint.com>

Strawberry Point Development Fund, Inc.
105 W Mission Street, P.O. Box 85
Strawberry Point, IA 52076
Phone: 563-933-4417
Fax: 563-933-4417
E-mail: econ.dev@strawberrypoint.com
Web site: <http://www.strawberrypoint.com>

Transportation:

Nearest Interstate: Interstate 380	Distance (miles): 65
Nearest 4-Lane Highway: U.S. Highway 20	Distance (miles): 20
Nearest Commercial Airport: Dubuque Regional Airport	Distance (miles): 69
Rail Served: No	

Utilities:

Electric Distribution: Alliant Energy
Natural Gas Distribution: Aquila
Water: City of Strawberry Point
Sewer: City of Strawberry Point
Local Telecommunications Service: Iowa Telecom

Offering:

Sale Price: Negotiable